



PBII

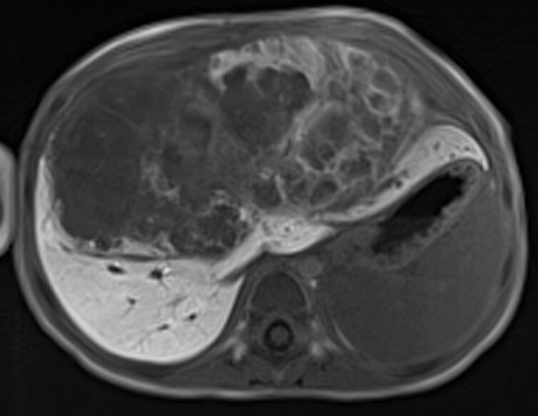
Pediatric Biomedical
Imaging Initiative

Pediatric Oncology Body Imaging Course

October 16-18, 2020

*St. Jude Children's Research Hospital
Memphis, TN*

Better Imaging. Better Outcomes.



Pediatric Oncology Body Imaging Course

October 16-18, 2020

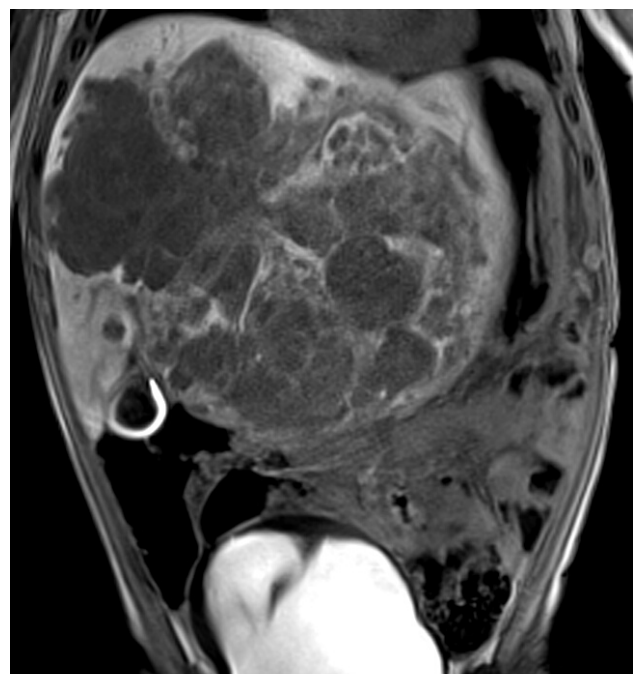
Recent basic science discoveries have led to substantial paradigm changes in the classification, diagnosis and management of pediatric tumors in the body. As outcomes in pediatric oncology continue to improve, there is increasing awareness surrounding the importance of the quality of survival, as well. This course is, therefore, focused on pediatric oncology imaging and related topics (e.g., clinical management, side effects of treatment, outcomes) with high-profile, expert speakers from St. Jude Children's Research Hospital and around the United States.

The course program includes updates on state-of-the-art imaging techniques, current diagnostic and response criteria, the latest clinical management trends and options, as well as outcomes in pediatric oncology.

During this course, you will improve your ability to describe common and uncommon imaging and clinical features of pediatric malignancies as well as to explain emerging technologies in pediatric oncologic imaging.

**For more information and to register,
visit www.stjude.org/PBII-imaging.**

**For questions, please email
imaging@stjude.org.**



Course Information

Course Highlights

- Setting up a 3D printing lab
- How 3D modeling helps me: a surgeons perspective
- AI and machine learning in pediatric oncologic imaging
- Alternatives to anesthesia: child-life and psychology
- Update on contrast agents
- Clinical challenges in reporting response criteria
- Acute and chronic complications of cancer therapy in children
- Total body PET-CT
- Immunotherapy: a primer for radiologists
- Imaging complications of immunotherapy
- Novel imaging techniques for assessment of immunotherapy response
- Review of PRETEXT/POST-TEXT, RECIST 1.1, Deauville/Cheson, IDRFs in neuroblastoma
- Pediatric chest and cardiac tumors
- Cardio-oncology in pediatrics
- Imaging bone and soft-tissue sarcomas
- Imaging renal, liver, pancreas and ovarian tumors
- Interventional oncologic radiology
- MR lymphangiography
- High Intensity Focused Ultrasound in pediatric interventional radiology
- Contrast ultrasound guided interventional procedures
- Interesting and challenging cases presented by attendees

Accreditation Information

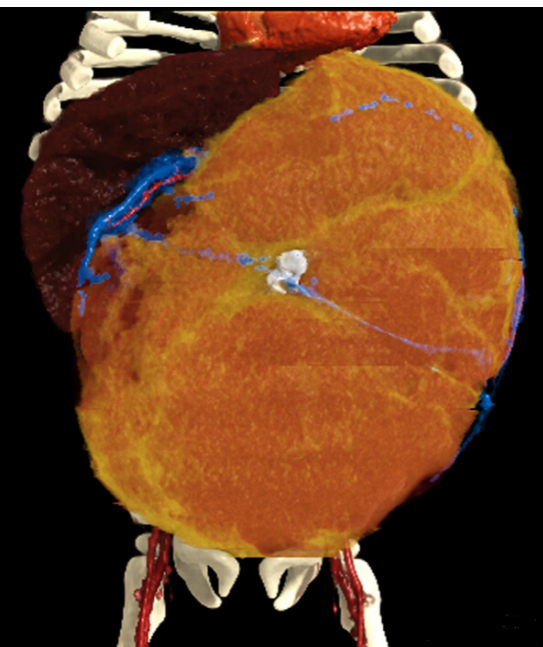
St. Jude Children's Research Hospital is accredited by the Accreditation Council for Continuing Medical Education to provide continuing medical education for physicians.

Registration

Registration is now open at www.stjude.org/PBII-imaging. Early-bird rates end September 2, 2020, and space is limited, so register now.

Scheduled Speakers

- Adina Alazraki, MD, Pediatric Radiology, Children's Physician Group, Egleston Hospital
- Doralina Anghelescu, MD, Pain Management Service, St. Jude Children's Research Hospital
- Rebecca Beroukham, MD, Cardiac Tumor Program, Harvard Medical School
- Heike Daldrup-Link, MD, PhD, Radiology, Stanford Medicine
- Matthew Davenport, MD, Radiology/Urology, University of Michigan
- Andrew Davidoff, MD, Surgery, St. Jude Children's Research Hospital
- Thomas Foley, MD, Radiology, Mayo Clinic
- Terrence Geiger, MD, PhD, Academic and Biomedical Operations, St. Jude Children's Research Hospital
- Anne Gill, MD, Radiology, Emory Interventional Radiology
- Jason Johnson, MD, Cardiac MRI, University of Tennessee Health Science Center/Le Bonheur Children's Hospital
- Niki Jurbergs, PhD, Psychology, St. Jude Children's Research Hospital
- Sue C Kaste, DO, Diagnostic Imaging, St. Jude Children's Research Hospital
- Geetika Khanna, MD, MS, Pediatric Radiology, Washington University School of Medicine
- Anna Lillis, MD, PhD, Pediatric Interventional Radiology, Nationwide Children's
- Beth McCarville, MD, Clinical Radiology, St. Jude Children's Research Hospital
- Arthur Meyers, MD, Musculoskeletal Imaging, Cincinnati Children's Hospital
- Cara Morin, MD PhD, Diagnostic Imaging, St. Jude Children's Research Hospital
- Lorenzo Nardo, MD, PhD, Radiology, UC Davis Health
- HaiThuy Nguyen, MD, Pediatric Radiology, Texas Children's Hospital
- Ashok Panigraphy, MD, Pediatric Radiology, UPMC Children's Hospital of Pittsburgh
- Ann Schechter, MD, Pediatric Radiology, Children's Diagnostic Imaging of Atlanta
- Barry L Shulkin, MD, Diagnostic Imaging, St. Jude Children's Research Hospital
- Abhay Srinivasan, MD, Pediatric Radiology, The Children's Hospital of Philadelphia
- Aimee Talleur, MD, Bone Marrow Transplantation & Cellular Therapy, St. Jude Children's Research Hospital
- Shandra Taylor, MS, Child Life, St. Jude Children's Research Hospital
- Michael Temple, MD, Interventional Radiology, The Hospital of Sick Children
- Alexander Towbin, MD, Clinical Operations and Informatics, Cincinnati Children's Hospital
- Andrew Trout, MD, Radiology and Medical Imaging, Cincinnati Children's Hospital
- Amy Vavere, PhD, Molecular Imaging, St. Jude Children's Research Hospital
- Benjamin A Youngblood, PhD, Immunology, St. Jude Children's Research Hospital



Space is limited!
Register now at
[www.stjude.org/
PBII-imaging](http://www.stjude.org/PBII-imaging).

